



# **Trapped Key Interlocks for Waste & Recycling Machinery**



**Application Guide**

**[www.castell.com](http://www.castell.com)**



The Future of Safety is Here



Castell Offices



Castell Installations

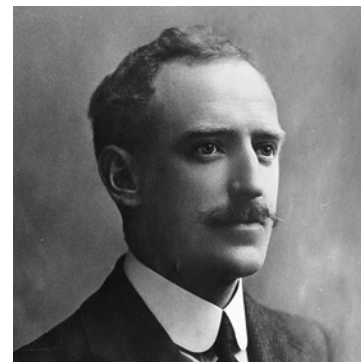
**We Keep You Safe at Work  
Worldwide**



## Contents

Why Choose Castell? .....	4
Trapped Key Interlocking - How To Design a System? .....	5
Applications for the Waste & Recycling Machinery	
Waste Shredder .....	6
Waste Compactor .....	7
Waste Bailer .....	8
Waste Sorter .....	9

# Why Choose Castell?



**Founder:**  
James Harry Castell  
1880 - 1953

## Castell's Expertise in the Waste and Recycling Industry

Throughout its 90 years history Castell has recognised the issues of health and safety and efficiency in the waste and recycling industry as a potentially dangerous and high risk environment. Not only are there mechanical risks of handling waste, there is also the risk from toxic and contaminated substances that require processing.

Through robust mechanical design Castell products deliver superior performance over extended periods of time particularly in harsh conditions and aggressive environments. The experience of these environments has enabled Castell to deliver solutions to the waste and recycling industry that allows fast safe access ensuring that both efficiency and safety are improved.

### Castell Offers:

- Expertise in providing the best possible trapped key solution
- 90 years of experience protecting people and assets in industry
- High quality innovative products
- ISO 9001: 2008 accreditation
- Global team dedicated to providing technical support and assistance in selecting the correct solution
- The widest range of rugged and reliable trapped key interlock products globally
- The ability to produce customised solutions to meet the demands of your specific application

## How to design an interlock system?

Through development and experience Castell have a number of methods to isolate machinery. This can be done mechanically, through control circuitry, through power circuitry or valve control. In complex operations a number of isolations may need to occur to ensure the plant is safe to work on. The isolation key(s) are then used to either gain direct access, are transferred to a time delay unit or for multiple entry points access through an exchange box.

## The three points of trapped key interlocking

### 1 Isolation

### 2 Key Exchange

### 3 Access Control



## Access and Personal Protection

Access to the hazardous area needs to be assessed as either part body, arm only, or full body access. Once this is determined an access lock(s) can be selected.

### Part Body Access

A part body access lock has only one lock and the isolation key is used to open this. Whilst the access lock is open the key can not be removed and therefore the process can not be started. Only once the lock is closed can the isolation key be removed and the process restarted.

### Full Body Access

Full body access locks have two locking mechanisms; the first step in the process is to insert the isolation key. This will allow the personnel key to be removed and then access can be granted by opening the bolt. The isolation key can only be removed once the personnel key has been inserted. Therefore whilst the personnel key is removed and the lock is open the process can not be started. Only once the lock is closed and the personnel key returned can the isolation key be removed and the process restarted.

## Coding a System

Please refer to our Interlock and padlock integrity policy.

# Waste and Recycling Machinery

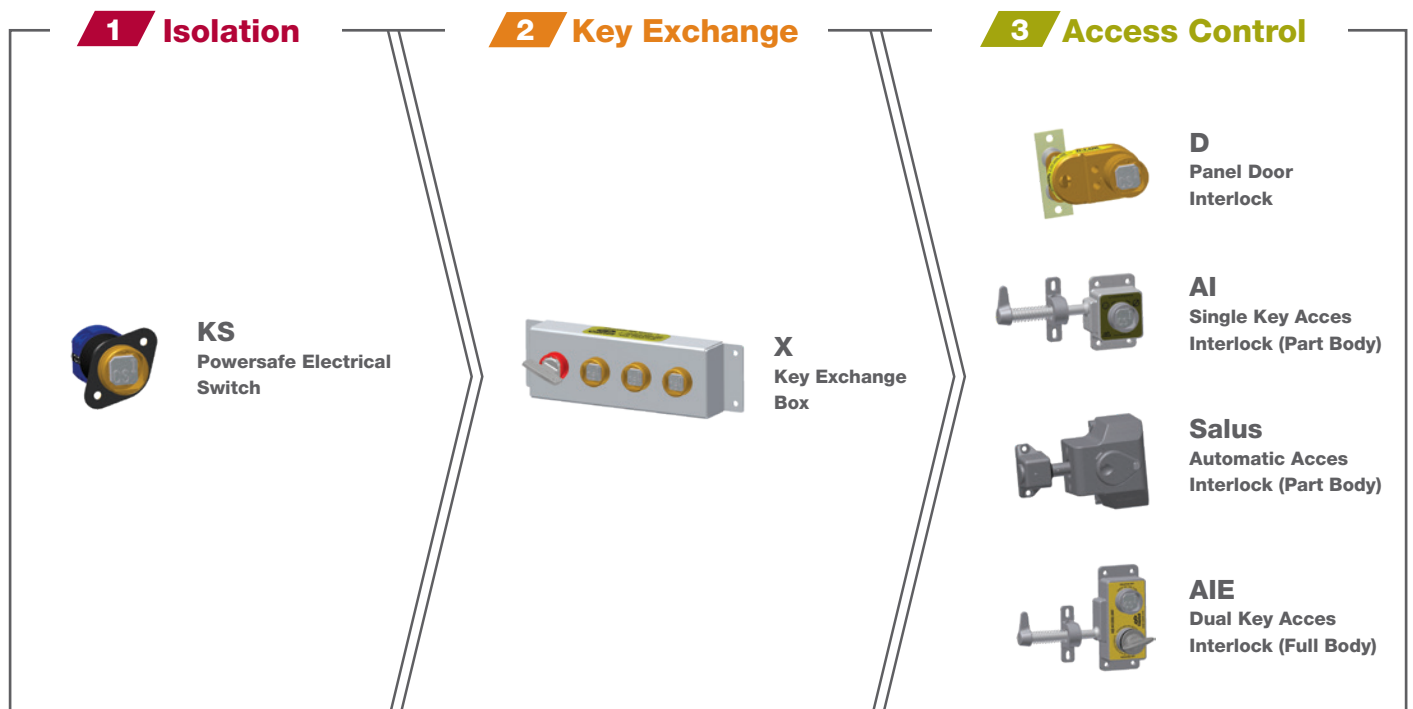
**Application** Waste Shredder

**Safety Issue** Danger from cutting parts

**Solution** Interlock power supply with the access lock on the access doors/ covers. The key is either locked in the isolator whilst the machine is running or in the access lock when in manual mode. Where there are multiple access points an exchange box can be used to access multiple points. Depending on the access gained either full body or part body access lock will be required



## Products To Provide Solution



# Waste and Recycling Machinery

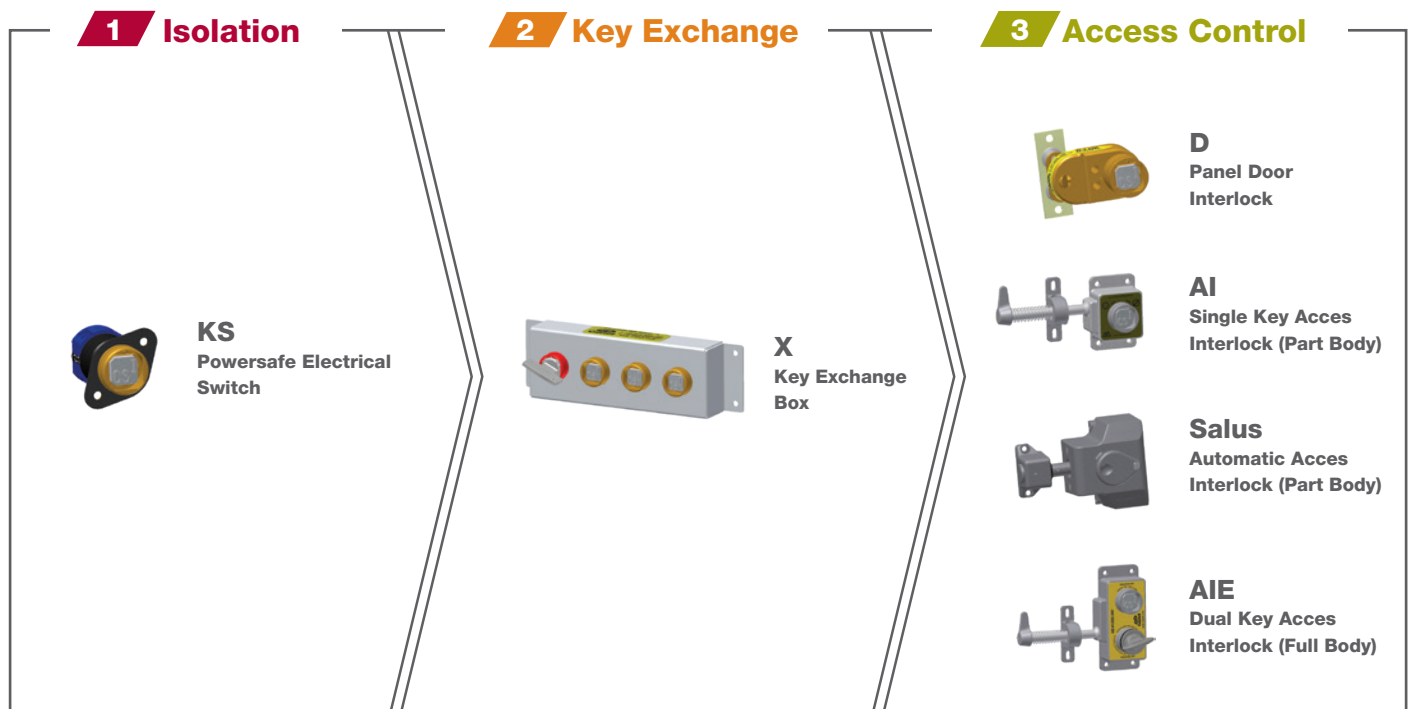
**Application** Waste Compactor

**Safety Issue** Danger from crusher

**Solution** Interlock power supply with the access lock on the access doors/ covers. The key is either locked in the isolator whilst the machine is running or in the access lock when in manual mode. Where there are multiple access points an exchange box can be used to access multiple points. Depending on the access gained either full body or part body access lock will be required



## Products To Provide Solution

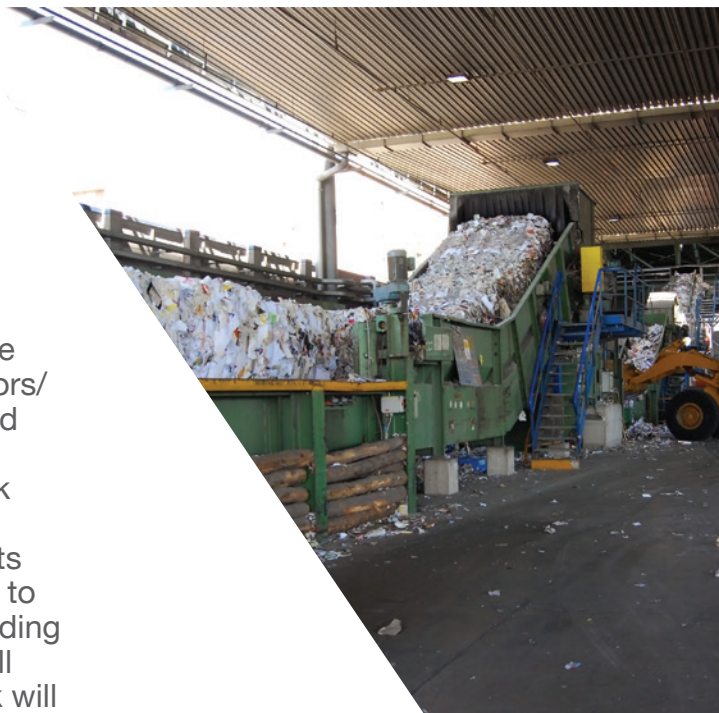


# Waste and Recycling Machinery

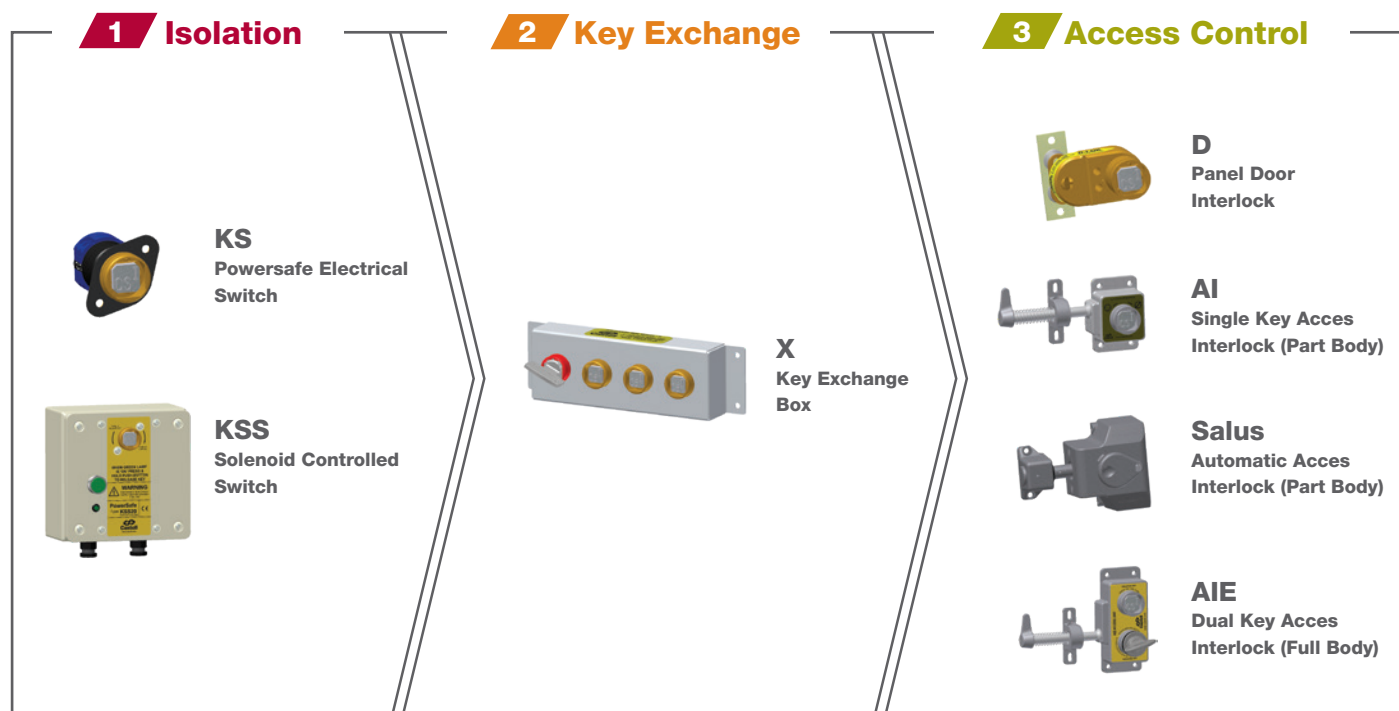
**Application** Waste Bailer

**Safety Issue** Danger from moving parts and crusher

**Solution** Interlock power supply with the access lock on the access doors/ covers. The key is either locked in the isolator whilst machine is running or in the access lock when in manual mode. Where there are multiple access points an exchange box can be used to access multiple points. Depending on the access gained either full body or part body access lock will be required



## Products To Provide Solution





# Waste and Recycling Machinery

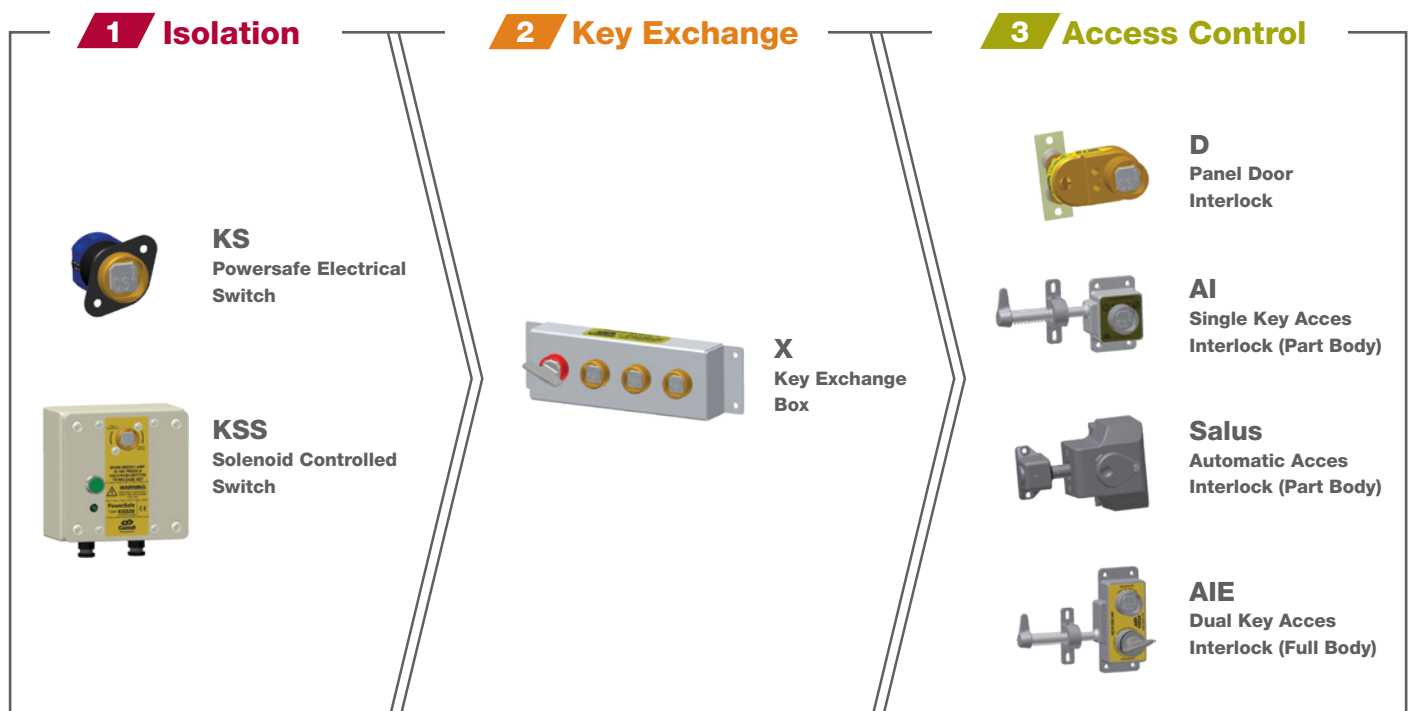
**Application** Waste Sorter

**Safety Issue** Danger from moving parts

**Solution** Interlock power supply with the access lock on the access doors/covers. The key is either locked in the isolator whilst the machine is running or in the access lock when in manual mode. Where there are multiple access points an exchange box can be used to access multiple points. Depending on the access gained either full body or part body access lock will be required



## Products To Provide Solution









The Future of Safety is Here



Castell Safety International  
The Castell Building  
217 Kingsbury Road  
London, NW9 9PQ  
UK

t: +44 (0)20 8200 1200  
f: +44 (0)20 8205 0055

[uksales@castell.com](mailto:uksales@castell.com)  
[www.castell.com](http://www.castell.com)



Castell Safety International  
Tower 185  
60185 Frankfurt am Main  
Germany

t: +49 (0)69 50 50 47 310  
f: +49 (0)69 50 50 47 450

[vertrieb@castell.com](mailto:vertrieb@castell.com)  
[www.castell.com](http://www.castell.com)



Kirk Key Interlock  
9048 Meridian Circle NW  
North Canton, OH 47720  
USA

t: +1 800 438 2442  
f: +1 330 497 4400

[sales@kirkkey.com](mailto:sales@kirkkey.com)  
[www.kirkkey.com](http://www.kirkkey.com)



SPS China  
2F, Building 63  
No 421 Hongcao Road, Xuhui District  
Shanghai PRC, 200233  
China

t: +86 (0)21 6040 7398  
f: +86 (0)21 5453 0630

[chinasales@castell.com](mailto:chinasales@castell.com)  
[www.castell.com](http://www.castell.com)

A HALMA COMPANY

